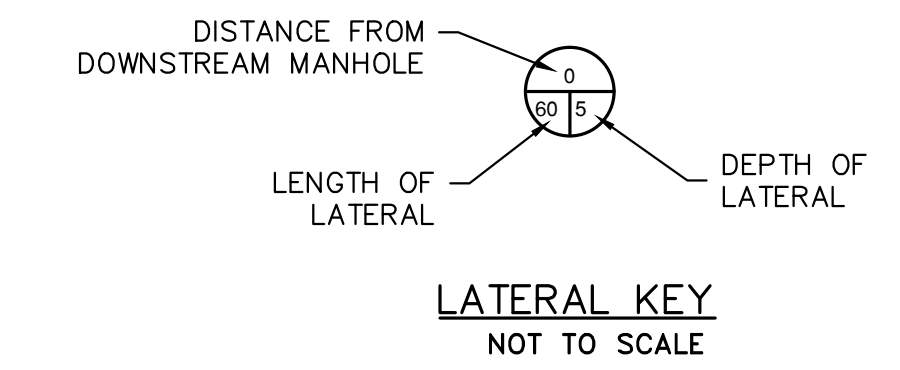


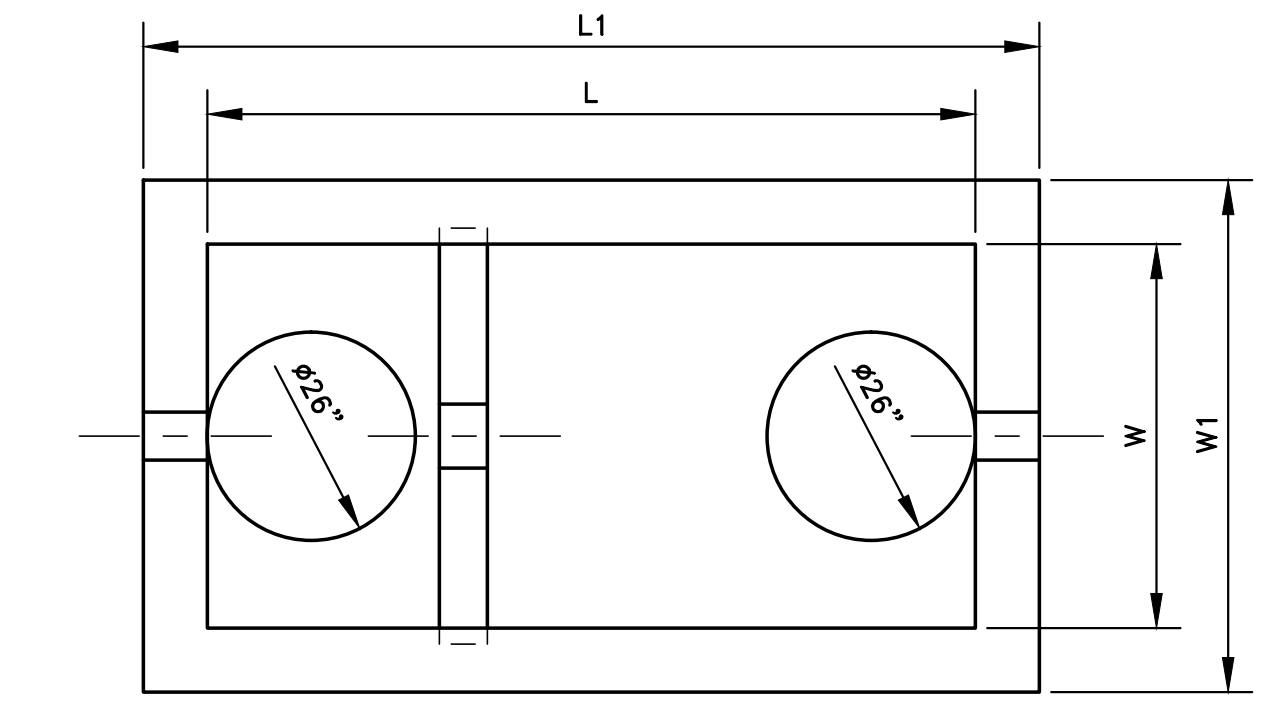




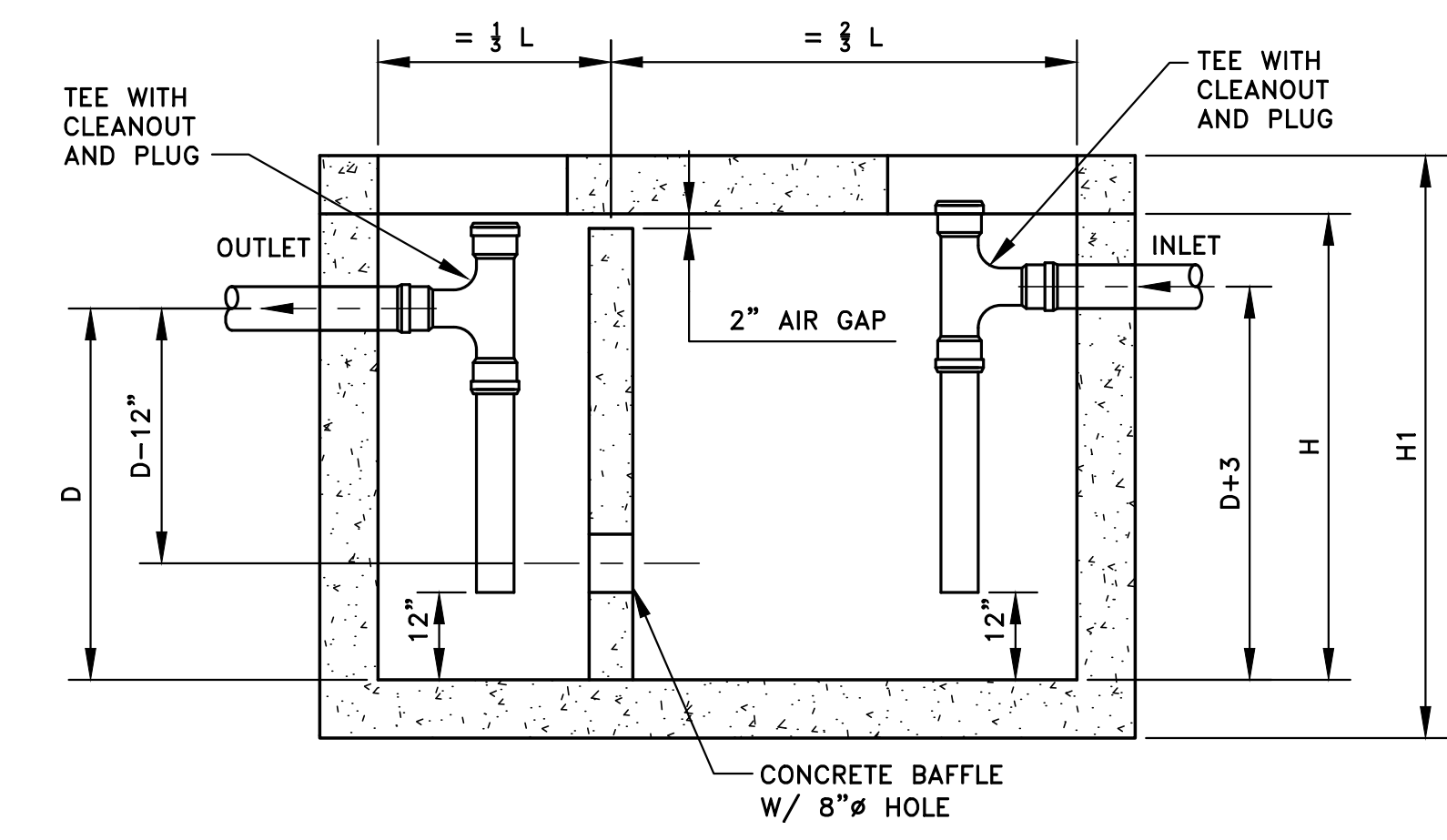
TANK SIZE	H	H1	L	L1	W	W1	D
1000 GALLON	5.33'	6.66'	8.00'	9.33'	4.00'	5.33'	4.25'
1250 GALLON	6.33'	7.66'	8.00'	9.33'	4.00'	5.33'	5.25'
1500 GALLON	7.50'	8.83'	8.00'	9.33'	4.00'	5.33'	6.41'
2000 GALLON	4.66'	5.50'	12.0'	12.8'	6.00'	6.83'	3.75'
2500 GALLON	5.66'	6.08'	12.0'	12.8'	6.00'	6.83'	4.75'
3000 GALLON	6.50'	7.33'	12.0'	12.8'	6.00'	6.83'	5.58'
3500 GALLON	4.83'	6.16'	16.0'	17.3'	8.00'	9.33'	3.75'
4000 GALLON	5.33'	6.66'	16.0'	17.3'	8.00'	9.33'	4.25'
4500 GALLON	5.83'	7.16'	16.0'	17.3'	8.00'	9.33'	4.75'
5000 GALLON	6.33'	7.66'	16.0'	17.3'	8.00'	9.33'	5.25'



TANK SIZE	H	H1	L	L1	W	W1	D
1000 GALLON	5.33'	6.66'	8.00'	9.33'	4.00'	5.33'	4.25'
1250 GALLON	6.33'	7.66'	8.00'	9.33'	4.00'	5.33'	5.25'
1500 GALLON	7.50'	8.83'	8.00'	9.33'	4.00'	5.33'	6.41'
2000 GALLON	4.66'	5.50'	12.0'	12.8'	6.00'	6.83'	3.75'
2500 GALLON	5.66'	6.08'	12.0'	12.8'	6.00'	6.83'	4.75'
3000 GALLON	6.50'	7.33'	12.0'	12.8'	6.00'	6.83'	5.58'
3500 GALLON	4.83'	6.16'	16.0'	17.3'	8.00'	9.33'	3.75'
4000 GALLON	5.33'	6.66'	16.0'	17.3'	8.00'	9.33'	4.25'
4500 GALLON	5.83'	7.16'	16.0'	17.3'	8.00'	9.33'	4.75'
5000 GALLON	6.33'	7.66'	16.0'	17.3'	8.00'	9.33'	5.25'



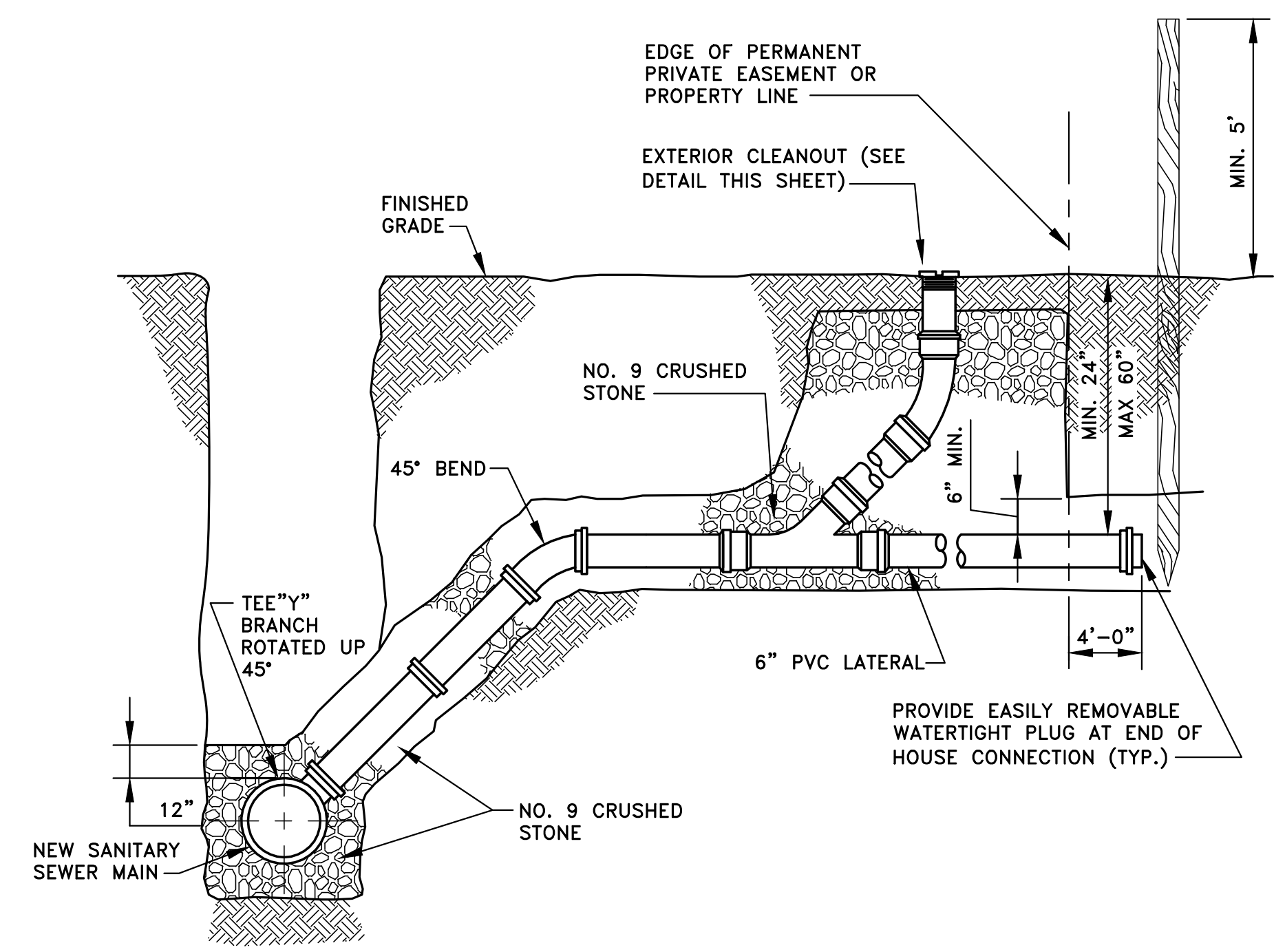
PLAN



SECTION

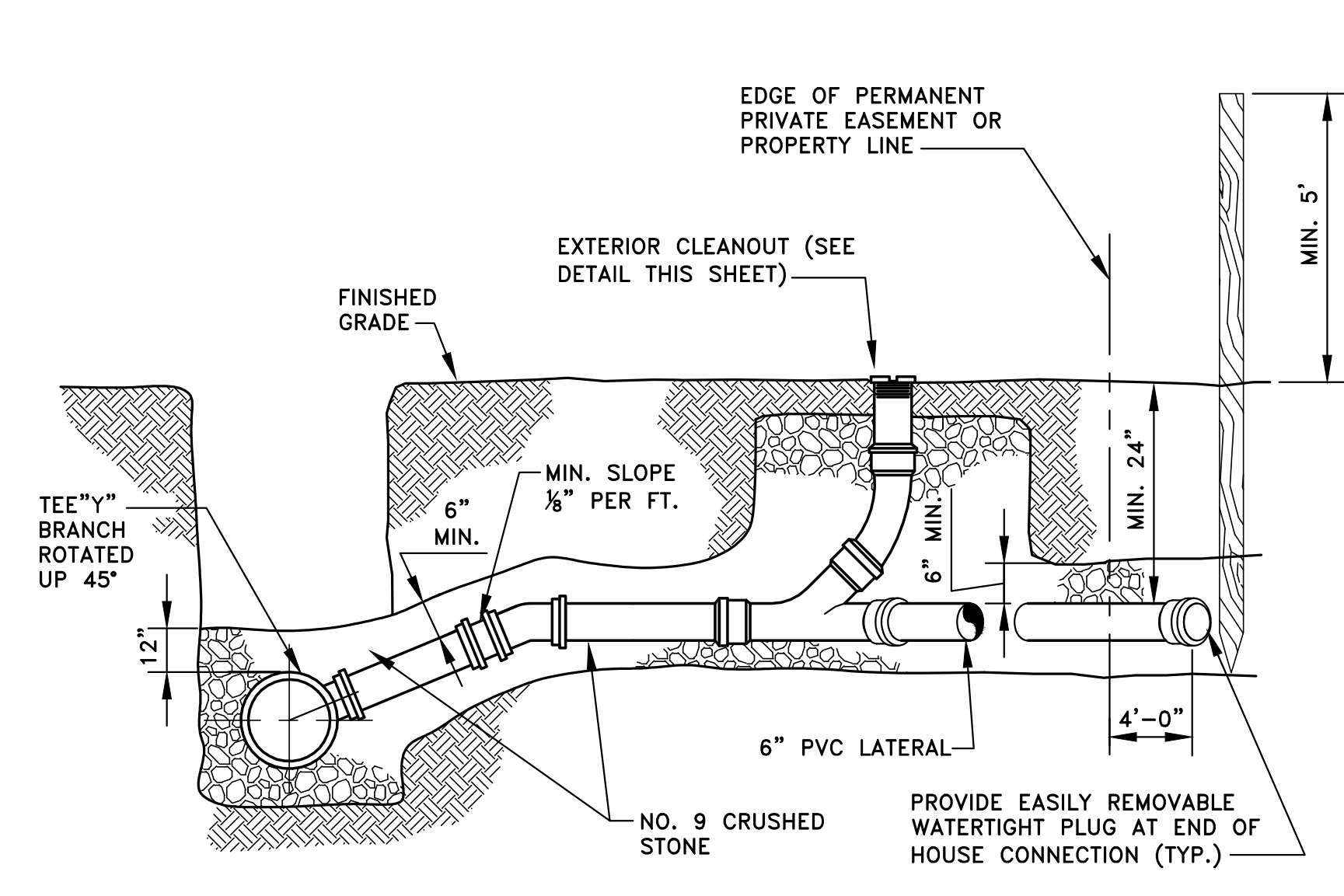
TYPICAL GREASE TRAP  
NOT TO SCALE

- NOTES:
- GREASE TRAP SHALL BE MANUFACTURED TO MEET MATERIAL REQUIREMENTS IN ASTM C913 AND C1613
  - CONCRETE SHALL BE 4500 PSI
  - NO STEPS SHALL BE INSTALLED
  - BOX SHALL BE ABLE TO ACCOMMODATE HS-20 LIVE LOADS
  - RISER OR GRADE RINGS CAN BE USED TO MEET FINISHED GRADE
  - OPENINGS CAN VARY TO ACCOMMODATE VARIOUS PIPE DIAMETERS.
  - FLEXIBLE WATERTIGHT CONNECTIONS SHALL BE PROVIDED FOR INLET AND OUTLET PIPING.
  - MINIMUM GREASE TRAP SIZE IS 1000 GAL. GMWSS TO DETERMINE SIZE REQUIRED ABOVE MINIMUM.
  - IN LIEU OF A CONCRETE TANK, A POLYETHYLENE GREASE TRAP EQUAL TO SCHIER GREAT BASIN, MODEL GB-250, OR GMWSS APPROVED EQUAL.



STANDARD LATERAL FOR DEEP MAIN  
(OVER 6') IN EARTH OR ROCK

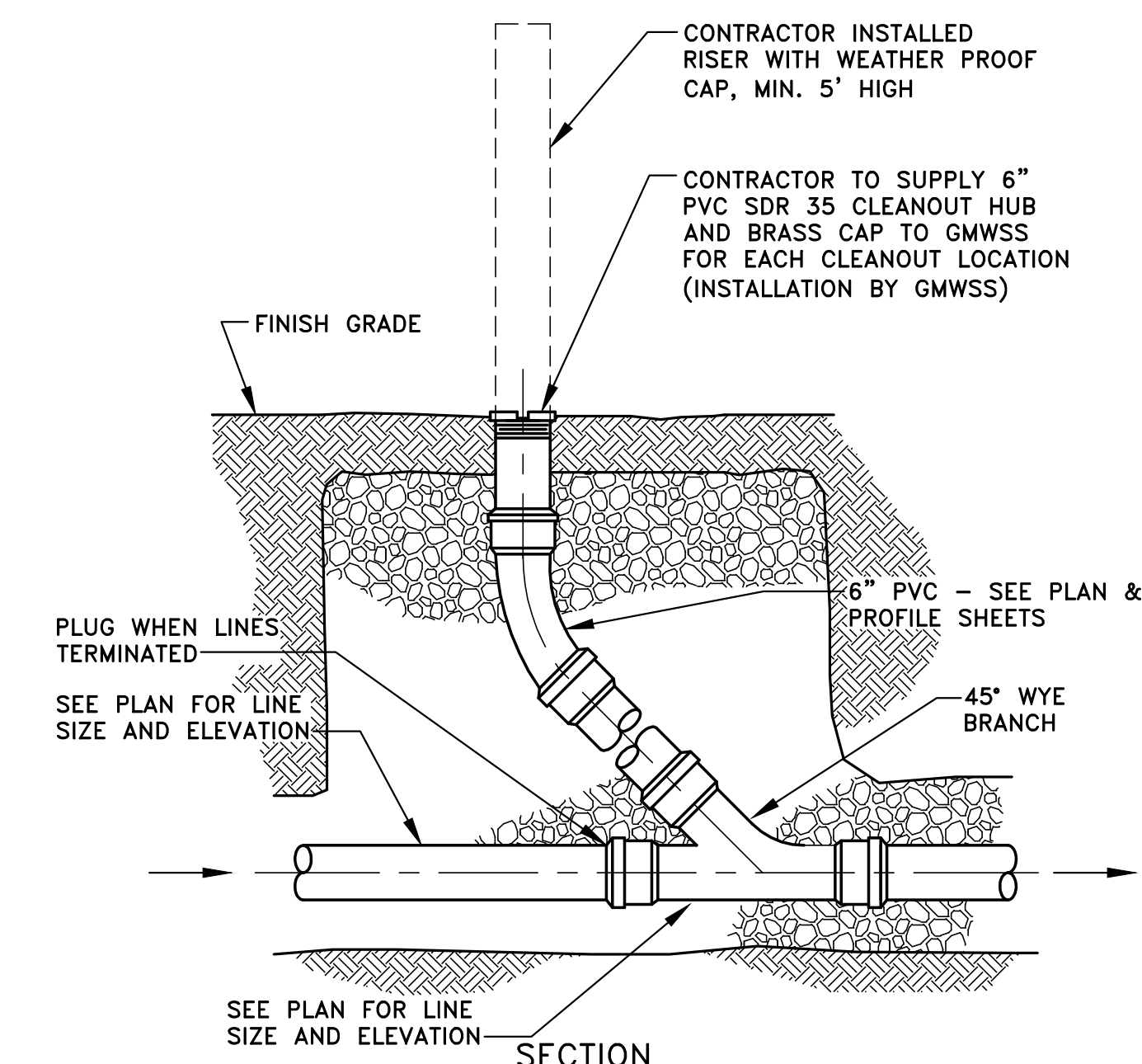
NOT TO SCALE



SIAMESE "Y" BRANCH OR LATERAL FOR  
SHALLOW MAIN (0-6') IN EARTH OR ROCK

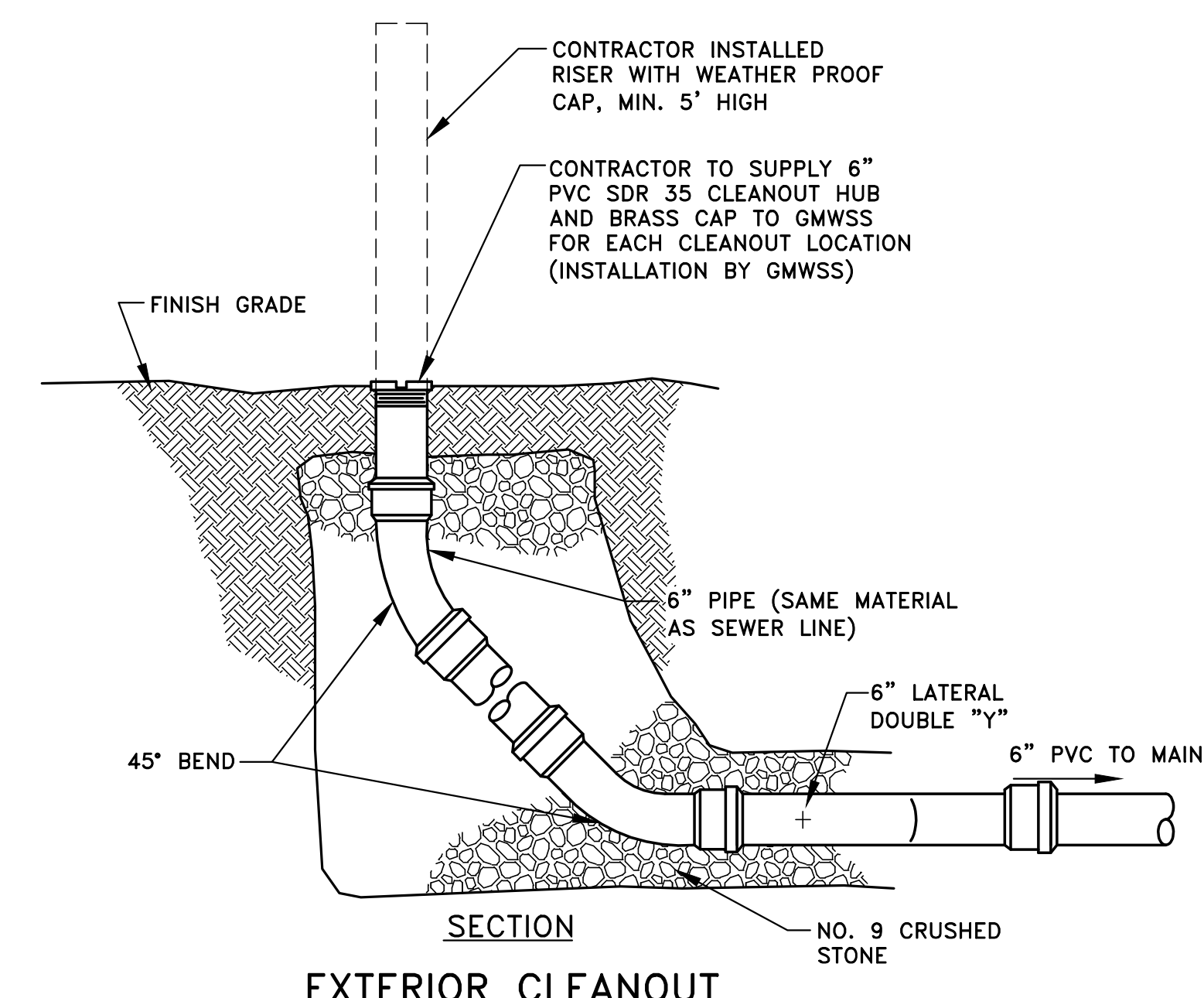
NOT TO SCALE

- NOTES:
- FOR MAINS LAID ON PRIVATE PROPERTY, ONLY THE "Y" BRANCH, CLEANOUT AND PLUG SHALL BE INSTALLED.
  - FOR MAINS LAID ON PUBLIC RIGHT-OF-WAY, THE LATERAL SHALL BE LAID TO THE PROPERTY LINE AND BEYOND TO THE DISTANCE INDICATED WITH CLEANOUT.
  - ALSO SEE GENERAL NOTES.



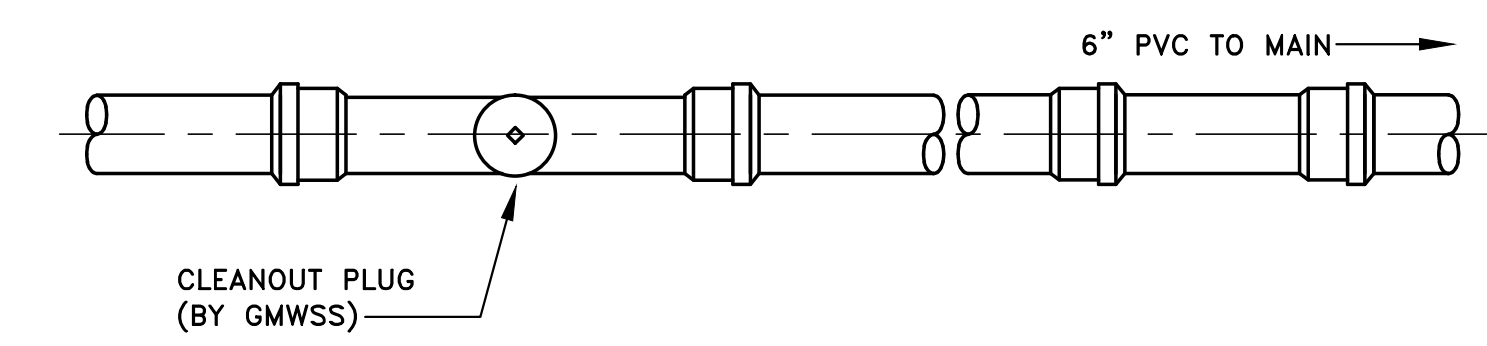
EXTERIOR CLEANOUT

NOT TO SCALE



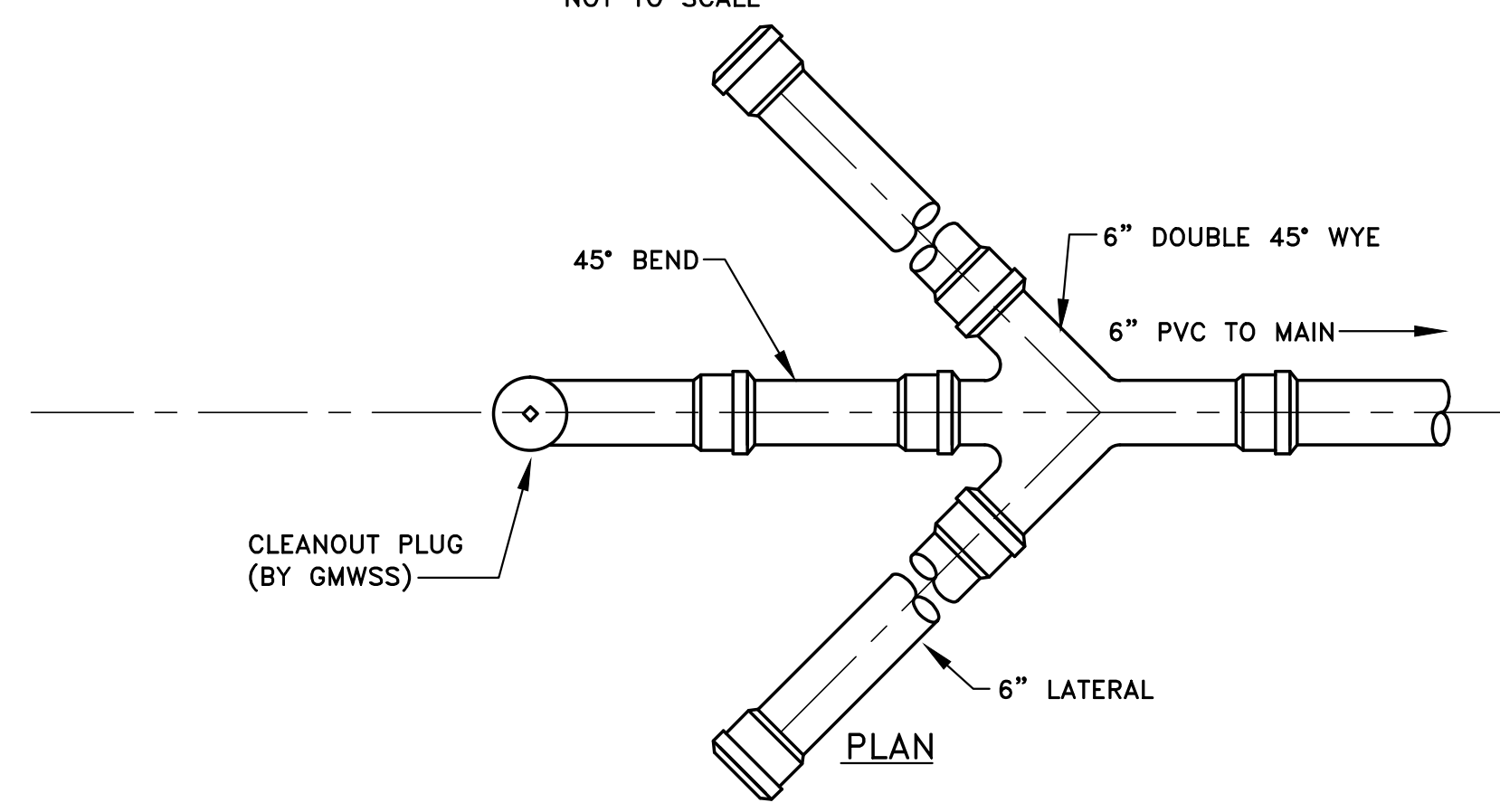
EXTERIOR CLEANOUT

NOT TO SCALE



PLAN  
EXTERIOR CLEANOUT

NOT TO SCALE



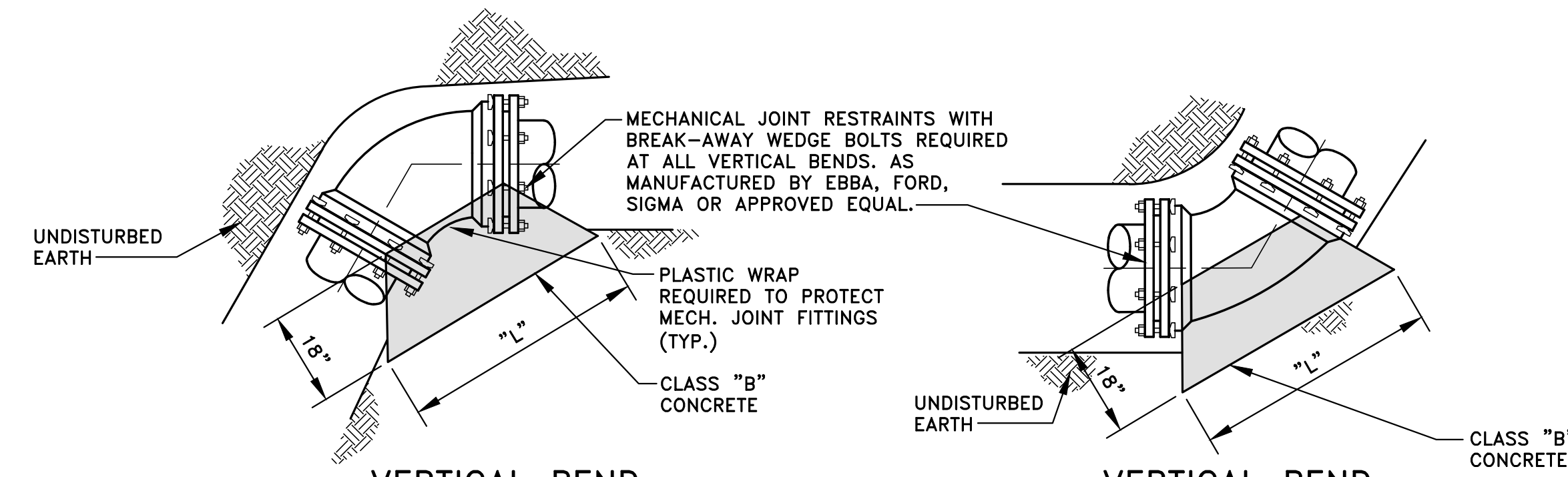
EXTERIOR CLEANOUT

NOT TO SCALE

GEORGETOWN MUNICIPAL WATER & SEWER SERVICE  
SCOTT COUNTY, KENTUCKY  
STANDARD SEWER LINE DETAILS  
REVISED APRIL 2023

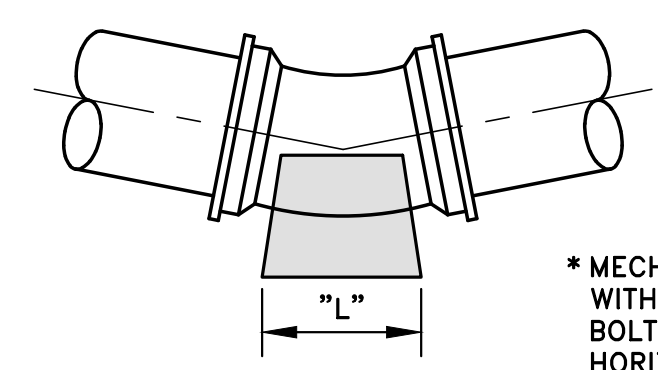
DRAWING INFORMATION	AS NOTED
SCALE	AS NOTED
DESIGNED BY	DDM
DRAWN BY	DDM
CHECKED BY	LSTAFF
PROJECT NO.	
DATE	
CADD DWG ID	



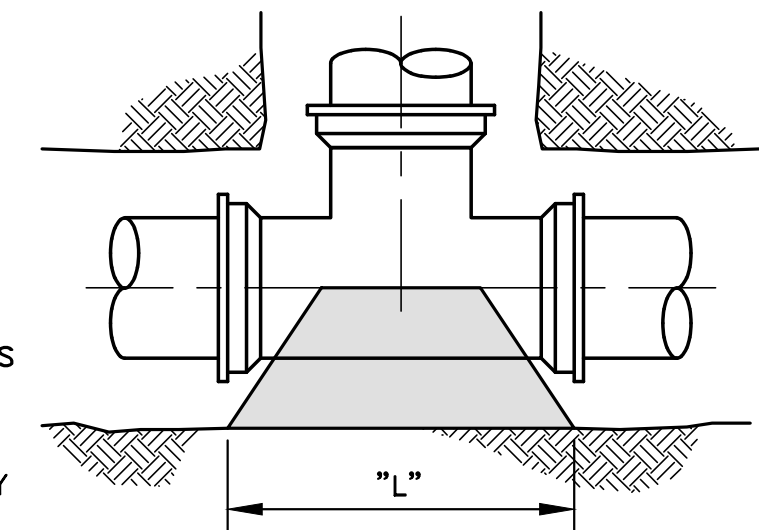


**VERTICAL BEND**  
(SEE THRUST BLOCK SCHEDULE FOR DIMENSIONS OF BLOCKING)

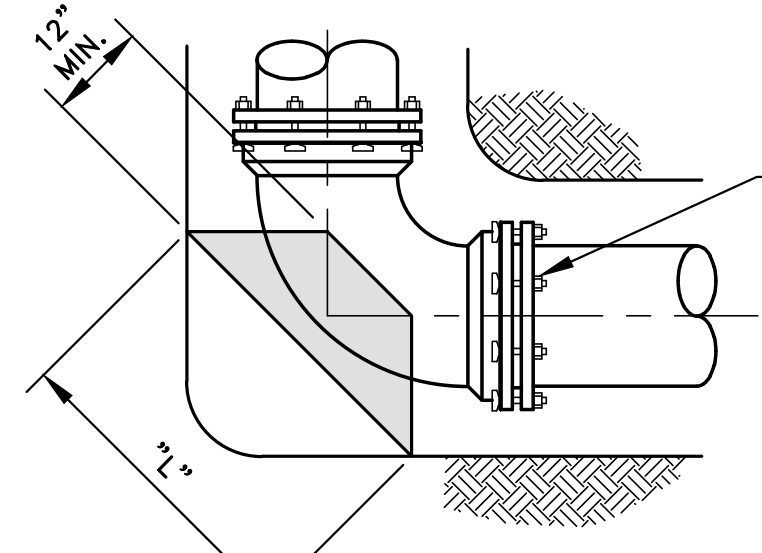
**VERTICAL BEND**  
(SEE THRUST BLOCK SCHEDULE FOR DIMENSIONS OF BLOCKING)



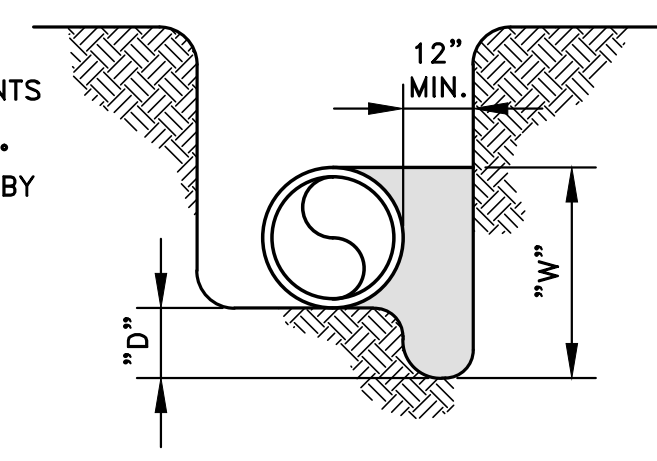
**11 1/4, 22 1/2 AND 45° BEND THRUST BLOCKS**  
(SEE THRUST BLOCK SCHEDULE FOR DIMENSIONS OF BLOCKING)



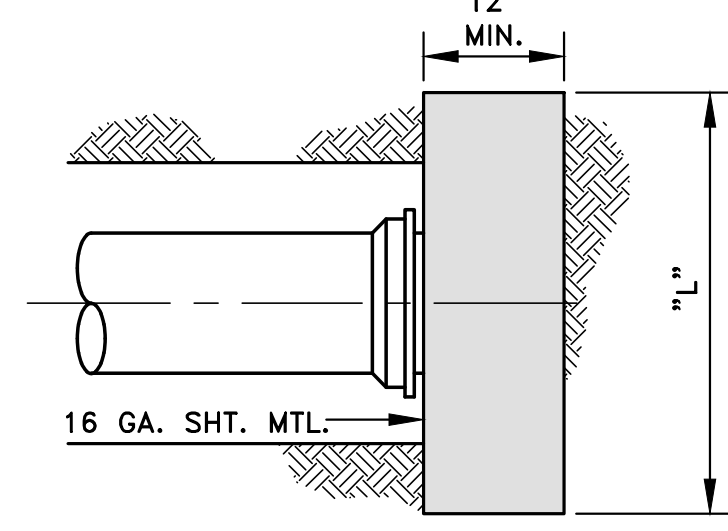
**TEE THRUST BLOCKS**  
(SEE THRUST BLOCK SCHEDULE FOR DIMENSIONS OF BLOCKING)



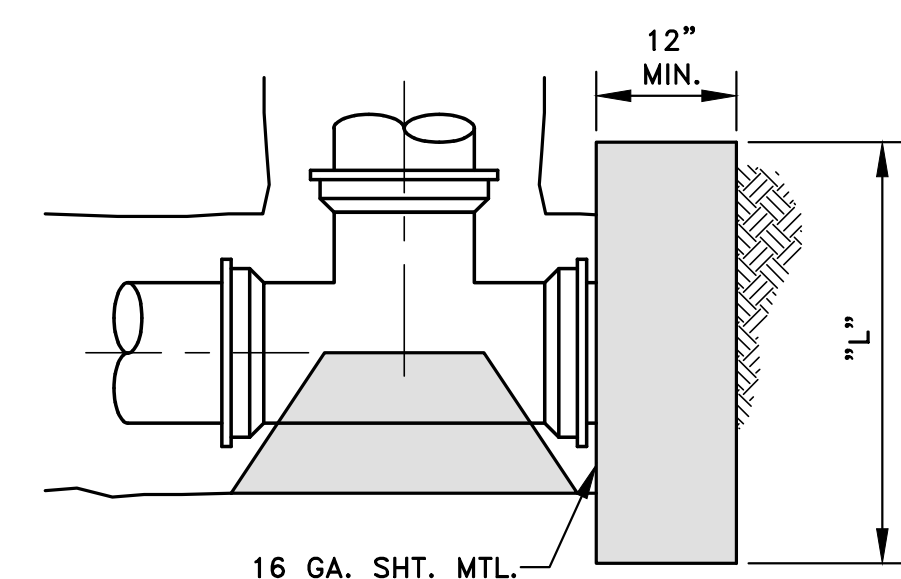
**90° BEND THRUST BLOCKS**  
(SEE THRUST BLOCK SCHEDULE FOR DIMENSIONS OF BLOCKING)



**SECTION-TYP. THRUST BLOCK**  
(SEE THRUST BLOCK SCHEDULE FOR DIMENSIONS OF BLOCKING)

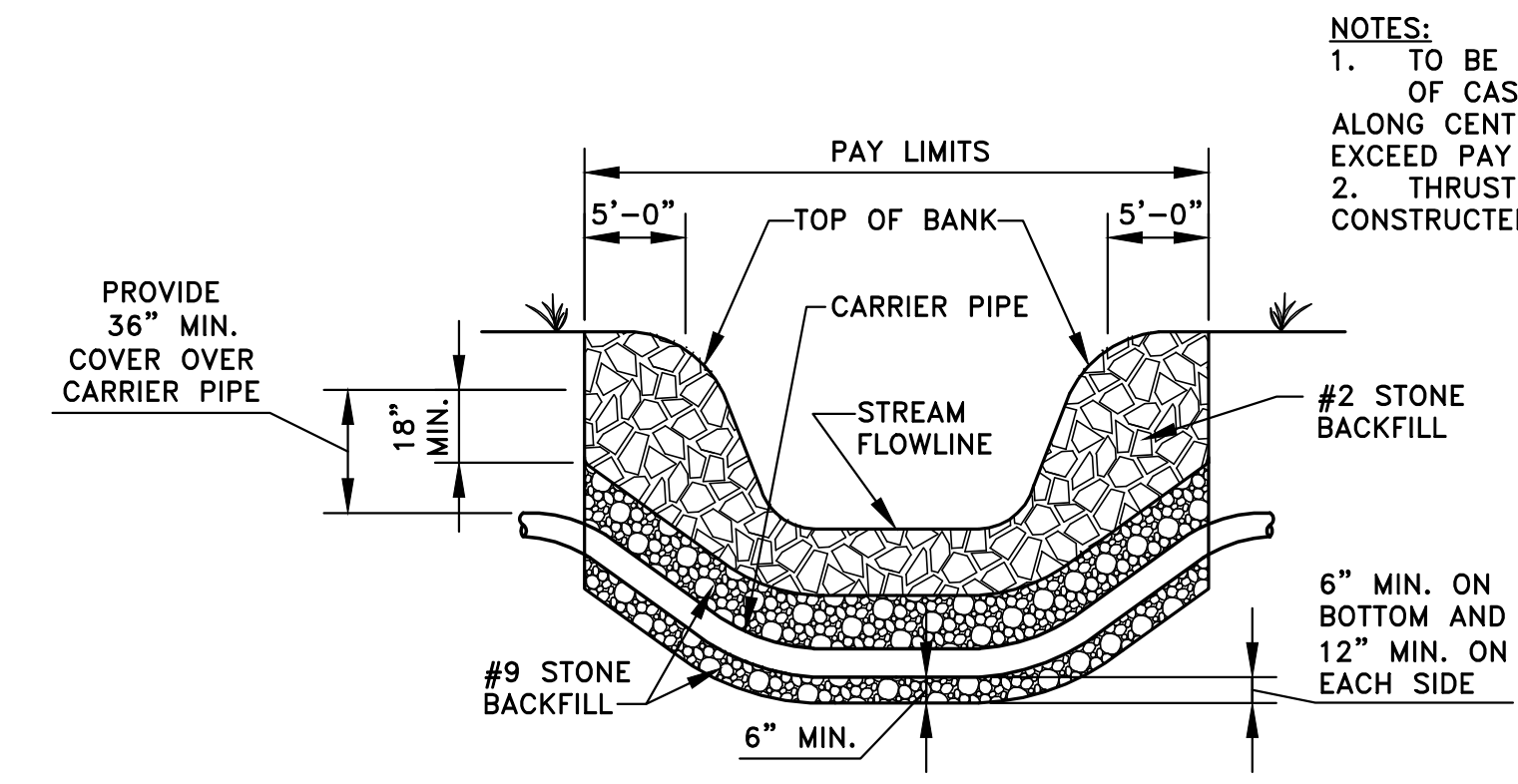


**END OF MAIN THRUST BLOCKS**  
(SEE THRUST BLOCK SCHEDULE FOR DIMENSIONS OF BLOCKING)

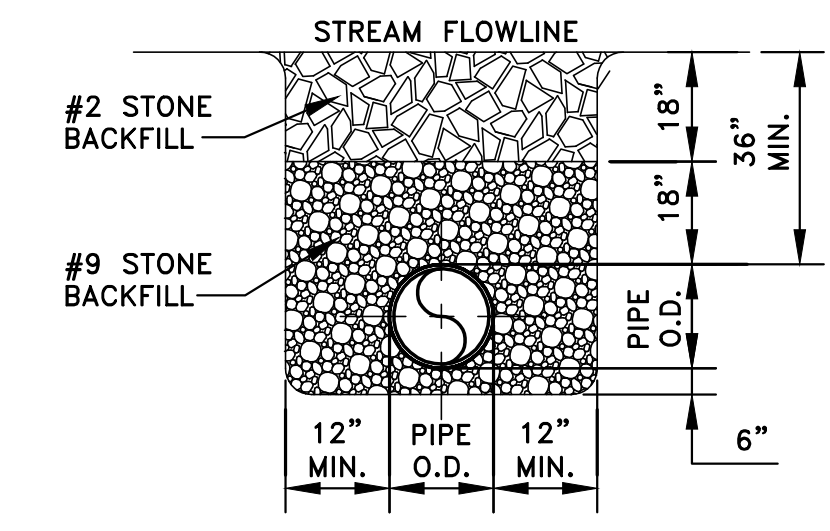


**PLUGGED TEE THRUST BLOCKS**  
(SEE THRUST BLOCK SCHEDULE FOR DIMENSIONS OF BLOCKING)

SIZE	90° Bend			45° Bend			22 1/2° Bend			11 1/4° Bend			Tee & End Main		
	D	W	L	D	W	L	D	W	L	D	W	L	D	W	L
2"	6"	10"	4"	4"	7"	3"	4"	7"	3"	4"	7"	3"	6"	10"	4"
3"	6"	10"	8"	4"	8"	6"	4"	8"	6"	4"	8"	6"	6"	10"	6"
4"	6"	11"	9"	6"	11"	7"	4"	9"	5"	4"	9"	5"	6"	11"	8"
6"	8"	15"	13"	6"	13"	12"	4"	11"	8"	4"	11"	8"	8"	15"	10"
8"	10"	21"	19"	8"	17"	17"	6"	15"	10"	4"	13"	6"	10"	21"	21"
10"	10"	23"	29"	8"	20"	22"	6"	17"	13"	6"	17"	13"	10"	23"	30"
12"	12"	27"	31"	10"	24"	27"	10"	23"	14"	6"	19"	9"	12"	27"	36"
14"	14"	31"	38"	13"	29"	31"	12"	27"	17"	6"	21"	12"	14"	31"	42"
16"	15"	34"	44"	15"	33"	36"	14"	31"	19"	8"	25"	13"	17"	36"	48"
18"	21"	42"	45"	18"	38"	39"	17"	36"	21"	10"	29"	14"	21"	41"	54"
20"	22"	45"	53"	21"	43"	42"	18"	39"	24"	10"	31"	16"	22"	44"	60"

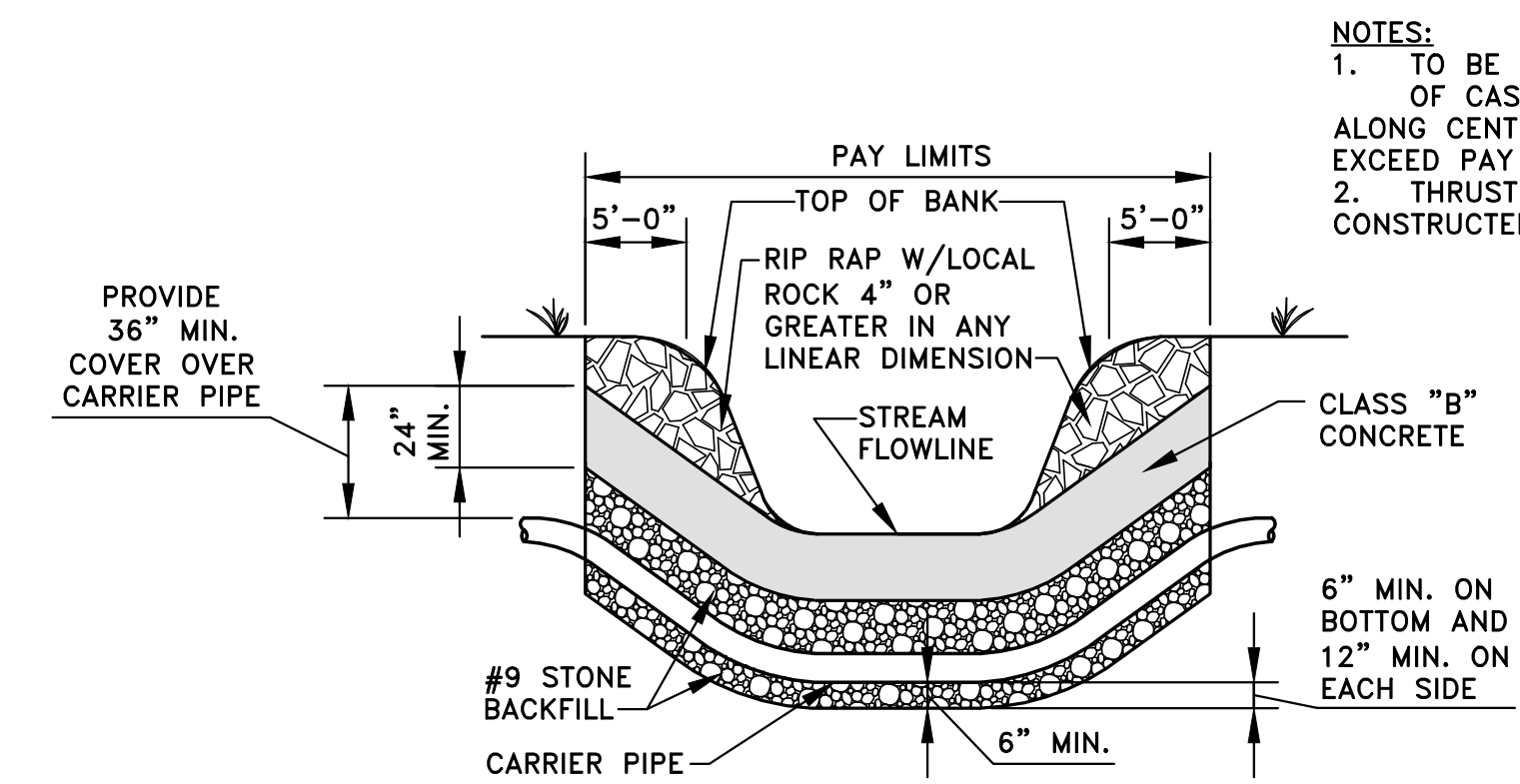


**TYPE "A" CREEK CROSSING IN EARTH OR LOOSE ROCK**

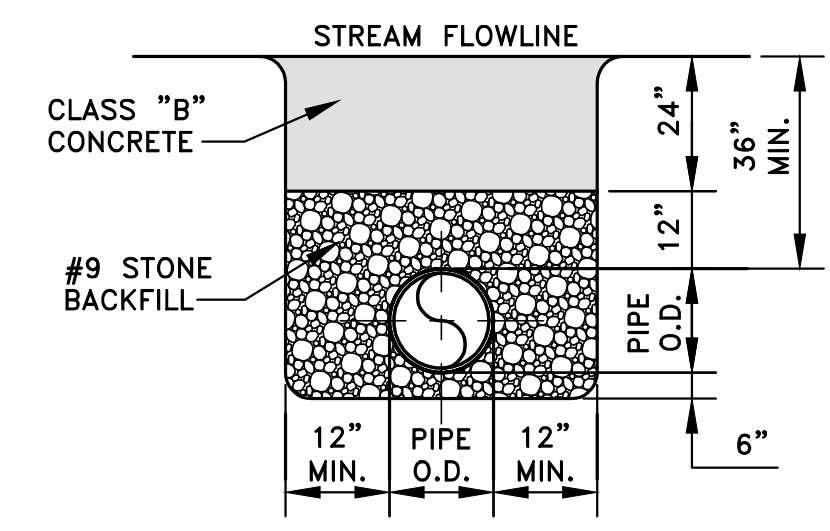


**TYPICAL SECTION-TYPE "A" CREEK CROSSING IN EARTH OR LOOSE ROCK**

NOTES:  
1. TO BE PAID PER LINEAR FOOT OF CASING AS MEASURED ALONG CENTERLINE OF PIPE. NOT TO EXCEED PAY LIMITS.  
2. THRUST BLOCKING SHALL BE CONSTRUCTED AT ALL BENDS.

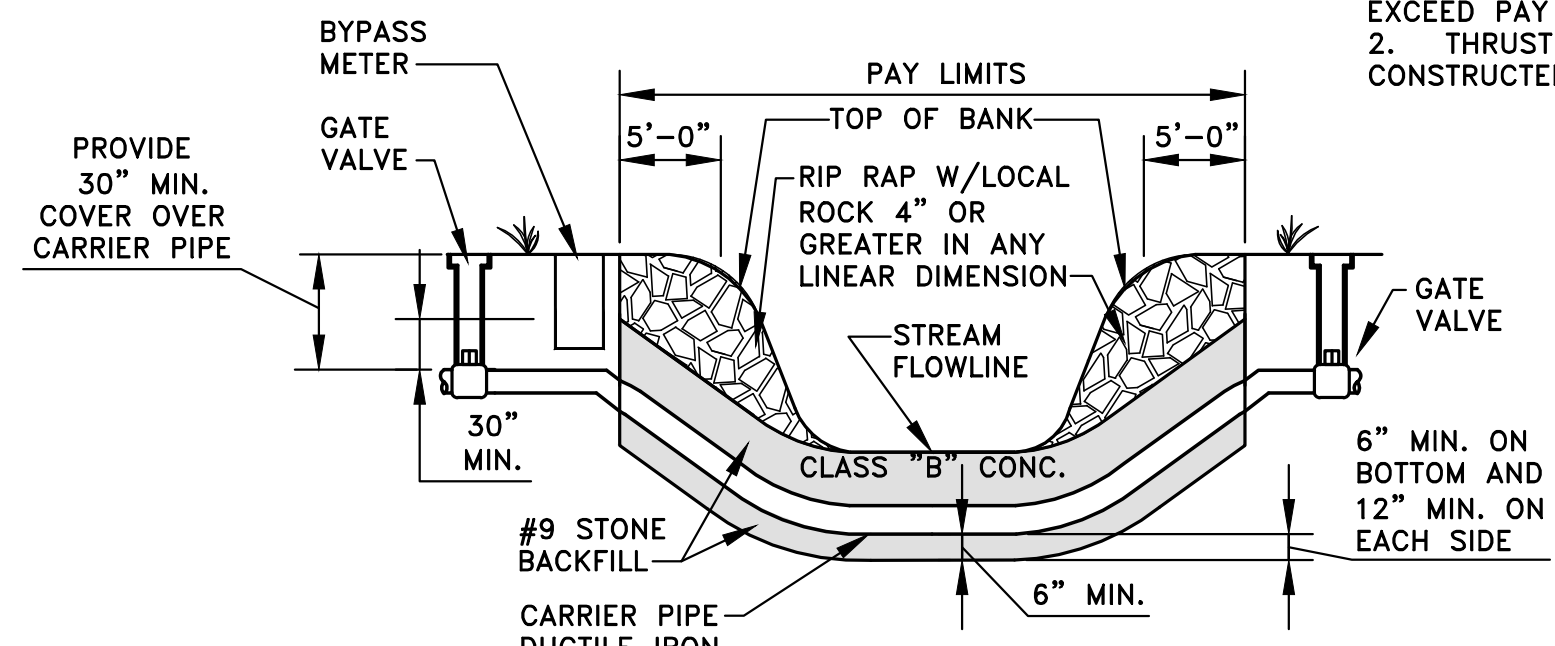


**TYPE "B" CREEK CROSSING WITH CONCRETE CAP**

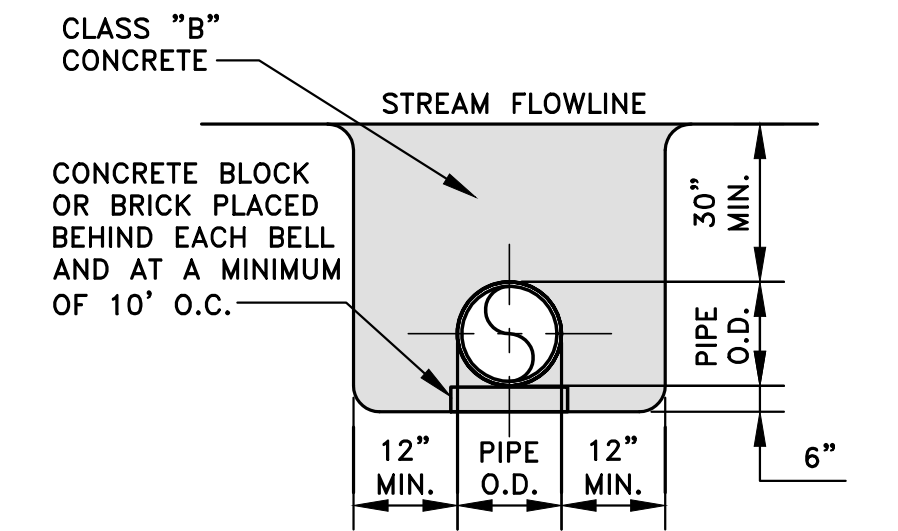


**TYPICAL SECTION-TYPE "B" CREEK CROSSING WITH CONCRETE CAP**

NOTES:  
1. TO BE PAID PER LINEAR FOOT OF CASING AS MEASURED ALONG CENTERLINE OF PIPE. NOT TO EXCEED PAY LIMITS.  
2. THRUST BLOCKING SHALL BE CONSTRUCTED AT ALL BENDS.

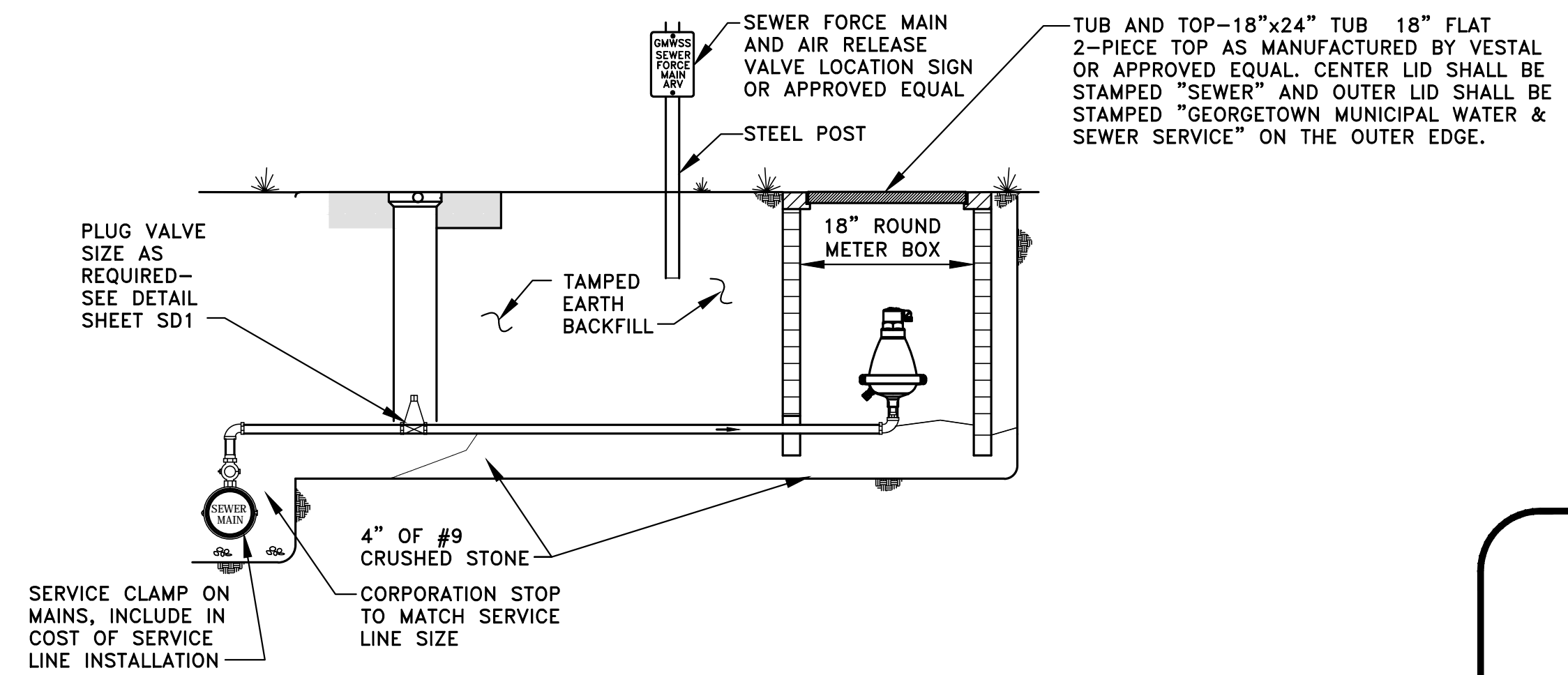


**TYPE "C" CREEK CROSSING WITH CONCRETE ENCASEMENT**



**TYPICAL SECTION-TYPE "C" CREEK CROSSING WITH CONCRETE ENCASEMENT**

NOTES:  
1. TO BE PAID PER LINEAR FOOT OF CASING AS MEASURED ALONG CENTERLINE OF PIPE. NOT TO EXCEED PAY LIMITS.  
2. THRUST BLOCKING SHALL BE CONSTRUCTED AT ALL BENDS.



**1" or 2" SEWER VACUUM/AIR RELEASE VALVE**  
NOT TO SCALE

NO.	REVISION:
BY:	DATE:

GEORGETOWN MUNICIPAL WATER & SEWER SERVICE  
SCOTT COUNTY, KENTUCKY  
STANDARD FORCE MAIN DETAILS  
REVISED APRIL 2023

DRAWING INFORMATION
SCALE : AS NOTED
DESIGNED BY : DDM
DRAWN BY : LSTAFF
CHECKED BY : LSTAFF
PROJECT NO :
DATE :
CADD DWG ID :